

MALAWI



March & May 2023 - Hybrid



MALAWIAN YOUTH FUTURES – INITIAL THINKING

INITIAL FUTURES ATTITUDE

Malawian youth were optimistic about the future and their capacity to influence it.

Predominant images of **strength, wisdom, and leadership** generated in the workshops: **elephant, lion, eagle, CEO, diplomat, and politician**



PROBABLE FUTURES

“We get lifted by lifting others”

Malawian youth are often seen as liabilities, not assets; They face many challenges and have limited opportunities. The nation, ‘still colonized’ from outside and within, needs to strive to function fully independently and support youth in becoming self-reliant.



DESIRABLE FUTURES

“Youth are assets, not liabilities”

Prosperous youth futures depend on the youth themselves taking responsibility for developing Malawi; A collective mindset shift is required; Government should realise and nurture youth potential; Youth should be able to rely on the government to provide essential protections and opportunities for growth.



REFRAME METAPHOR

“The Heterarchical Murmuration-Intensive Society”

Kenyan youth developed creative new imaginaries summarised in their new metaphor:

‘Change is inevitable - a world of discovery where adaptation to novelty, shocks and surprises are natural’



EMERGING POLICY ISSUES RAISED BY YOUTH

Education space:

- Focus on critical thinking, creativity, innovation, sustainability, digital literacy
- Education reform to address unemployment eg. skills-based training, vocational education,

Civic space:

- Intergenerational, inclusive engagement
- Economic space:
 - youth empowerment, entrepreneurial mindset and apprenticeships
 - Technological access and advancement
 - Sustainable, inclusive, equitable economic growth

Health space:

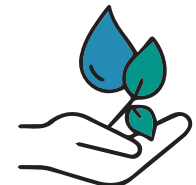
- Mental health awareness and stigma reduction

Political space:

- Transparency, accountability, good governance
- Youth as change agents integral in decision-making processes
- Inclusive, meaningful participation of youth and women
- Regional interconnectedness, global unity

Environmental space:

- Capacity building for emerging issues eg. climate change, economic growth, social justice
- Climate change mitigation and resilience

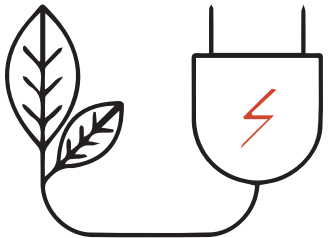


VIABLE TRANSFORMATIVE INNOVATIONS

- **Eco-Investment:** Harmonizing policies and partnerships in Malawi for significant eco-investment, aligning government and private sectors to propel eco-friendly projects, renewable energy, and conservation for sustainable economic growth.
- **Tech Service Delivery:** Inspired by Rwanda's medical drone system, revolutionizing rural service delivery in Malawi through technology, enhancing access to healthcare and education, and fostering innovation for marginalized communities.
- **Agricultural Investment:** Ramping up sub-Saharan Africa's agricultural investment, including Malawi, for sustainable food production, modernizing techniques, and empowering rural communities to reduce vulnerability and ensure food sustainability.
- **Tax Reduction for Growth:** Implementing tax reduction in Malawi, like Kenya, as a catalyst for business growth, innovation, and job creation, stimulating investment for increased revenue and improved quality of life.
- **University Tech Investment:** Directing Malawi's government investment to enhance university-level technology for medical innovation, empowering local researchers, positioning the country at the forefront of healthcare advancements for a healthier, more prosperous future.



MALAWI VISION 2035



In the transformative year of 2023, Malawi faced multifaceted challenges, including economic instability, gender inequality, and climate change. However, the nation's unwavering spirit and collective determination sparked a profound transformation. Education became a catalyst for change, with a surge of girls breaking barriers, and the feminist movement gained momentum, challenging norms for gender equality. The youth found their political voice, ushering in inclusivity and representation. A revolution in climate-smart agriculture and infrastructure investments reshaped foundations, fostering connectivity and development. Accessible Youth Friendly Health Services prioritized citizens' well-being, while youth-led innovation flourished, embracing solar energy for sustainability. Malawi preserved its cultural identity and commitment to peace, with meaningful youth participation fueling progress. The transformed nation emerged with a stable economy, inclusive societies, and empowered individuals, showcasing resilience, unity, and the boundless potential of renewal through innovation and commitment to change.

